

Meade's LPI-G Quick Start Guide

1. What's in the box.

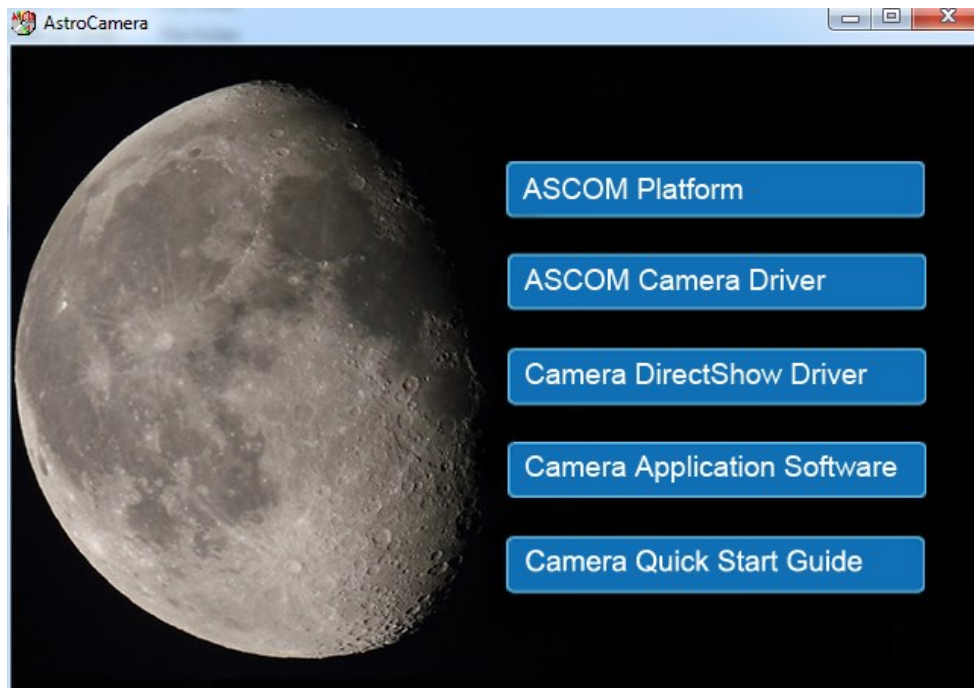


Quick Start Summary

1. Install Meade's SkyCapture software, camera Directshow drivers, and ASCOM Platform & camera drivers onto the computer using the included Meade SkyCapture CD-ROM.
2. If you will be using a special camera filter, attach the included nosepiece to the front of the camera. Then thread on the special camera filter to the front of the nosepiece.
3. Connect the Meade LPI-G to the computer using the included USB 2.0 cable.
4. If using the camera as an autoguider, connect one end of the included ST-4 cable into the camera and the other end into the telescope guider port. See your telescope mount instructions on how to do this.

2. Software Installation

Insert the CD-ROM into the computer and wait for the below screen to appear. If it doesn't appear, go to "My Computer" and double-click on the CD-ROM drive where the Meade SkyCapture was placed. Then, double click on the autorun.exe icon to bring up the below screen.



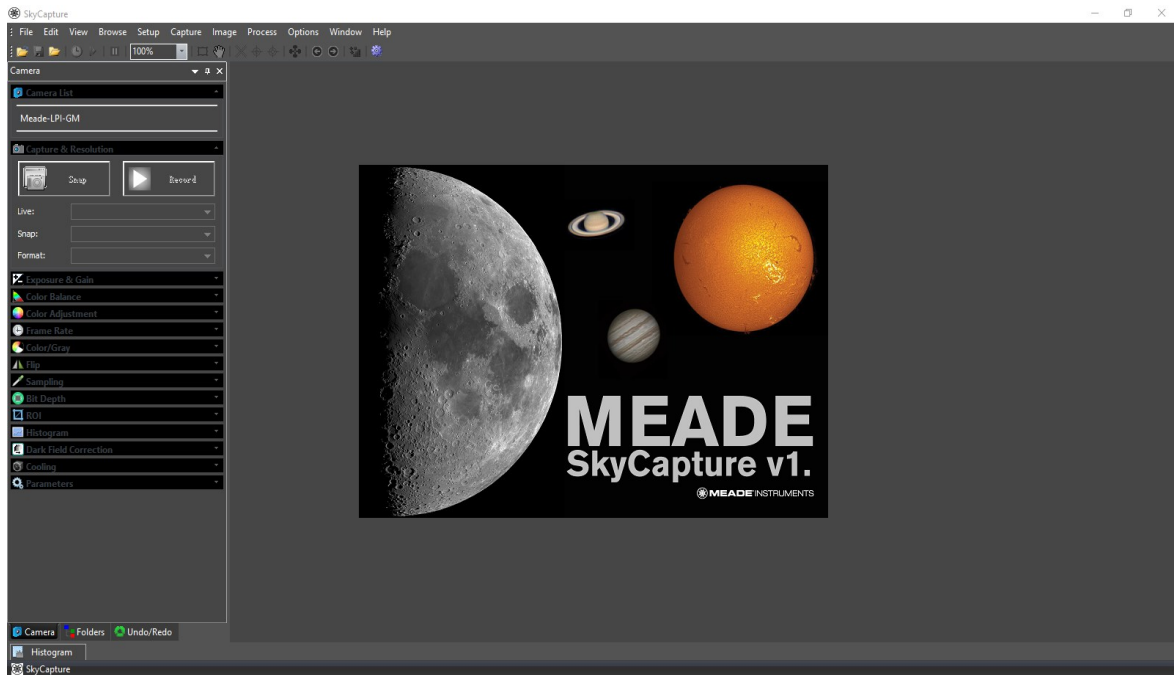
✧ Installing Meade's SkyCapture

Select the "Camera Application Software" to install Meade's SkyCapture software. The SkyCapture software allows for both basic image capture and image processing functions suitable for both planetary and deep-sky imaging.

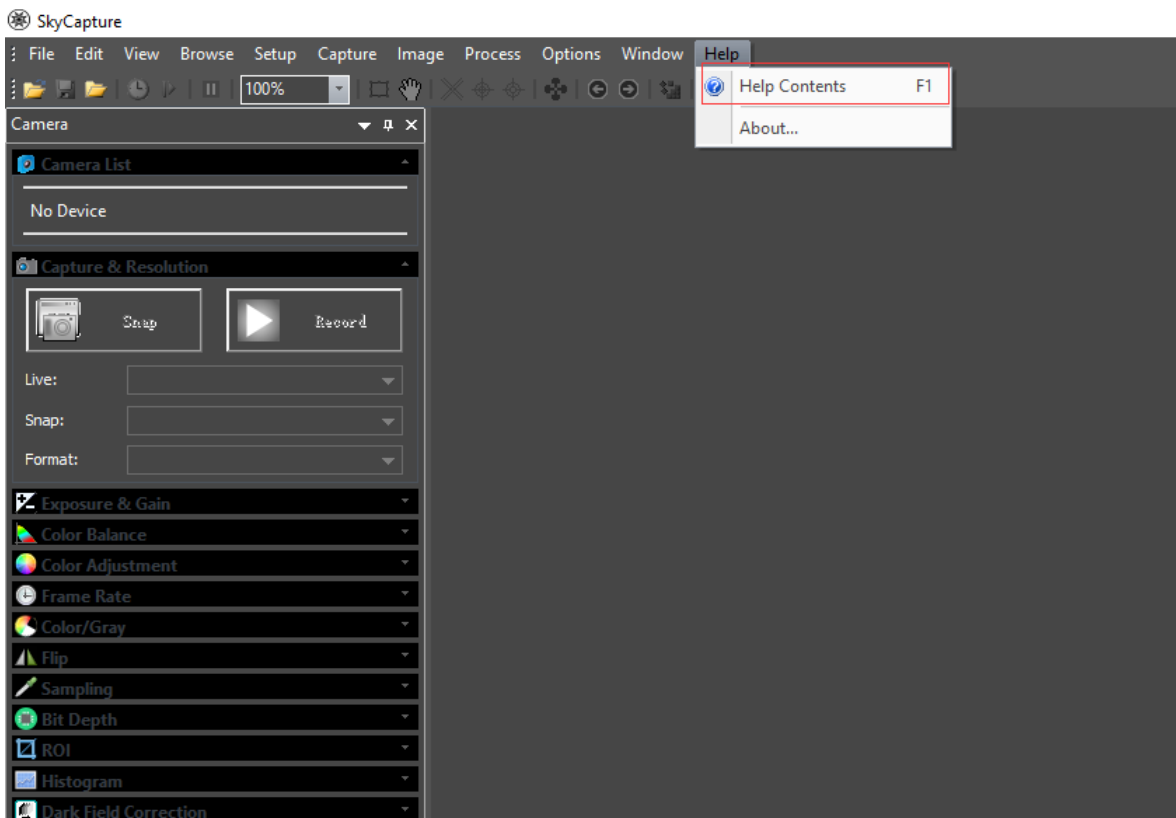


After the SkyCapture software installation completes, double-click on the SkyCapture icon placed on the desktop to open Meade's SkyCapture software.





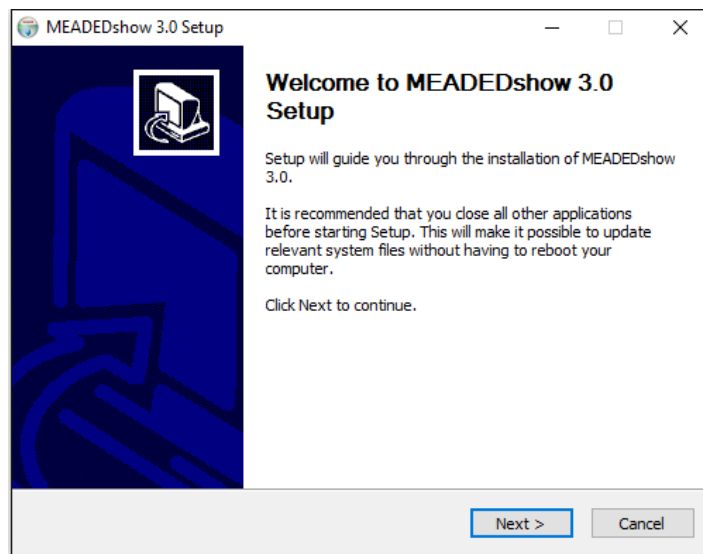
For detailed instructions on using the numerous SkyCapture features, go to the Help menu for more details.



✧ Installing the DirectShow Drivers

It's recommended you install the DirectShow drivers before using the Meade LPI-G camera. DirectShow drivers allow you to use 3rd party programs that use the DirectShow interface. Additionally, the DirectShow drivers allow the camera to image at a higher frame-rate than ASCOM drivers and is ideal for taking video. The DirectShow drivers also offers additional features such as auto-exposure. However, the RAW format is not supported by DirectShow.

To install the DirectShow drivers, click on "Camera DirectShow Driver" button found on the CD-ROM startup screen. Follow the on-screen instructions to complete the installation.

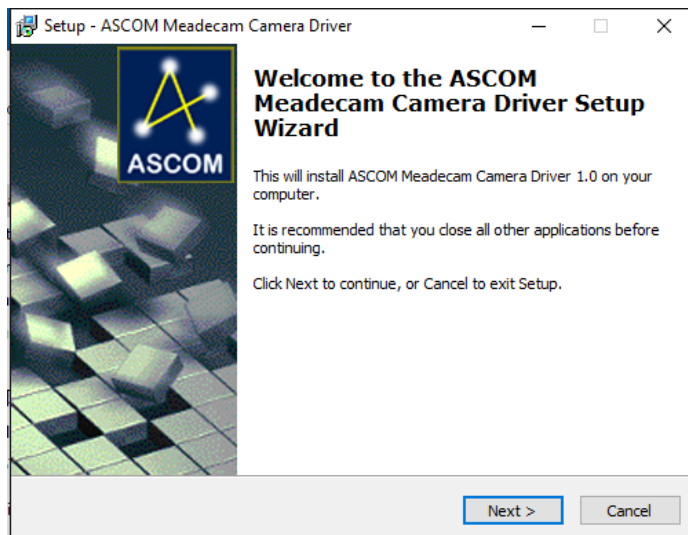
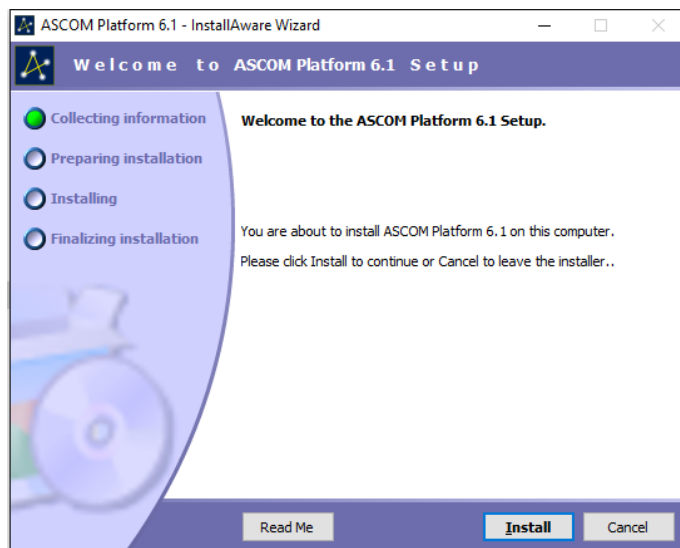


✧ Installing the ASCOM drivers

Many 3rd party software uses the ASCOM platform to interface with cameras and telescope equipment. If auto-guiding, imaging in RAW format, or wanting plug and play compatibility with 3rd party software, it's necessary to install the ASCOM & DirectShow drivers. Third party software such as Maxim DL, FireCapture, SharpCap, and PHD Guiding will also require the ASCOM and/or DirectShow drivers for LPI-G functionality.

To install the ASCOM drivers, first install the "ASCOM Platform" by clicking on the "ASCOM Platform" button found on the CD-ROM startup screen and follow the on-screen instructions.

After the ASCOM platform is installed, install the ASCOM Camera Drivers by clicking on the "ASCOM Camera Driver" button found on the CD-ROM startup screen. Follow the on-screen instructions to complete the installation



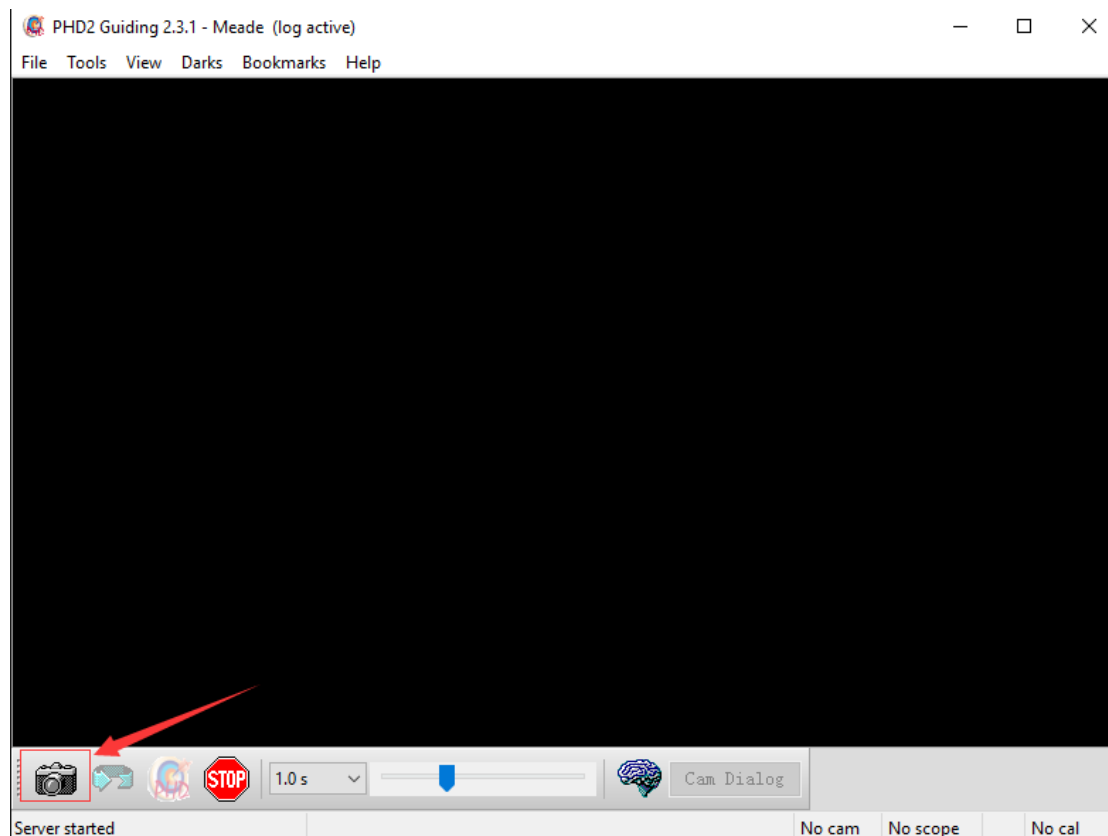
Autoguiding with the LPI-G

The Meade SkyCapture software does not contain autoguiding software. If you want to autoguide with the LPI-G, it's recommended you download 3rd party guiding software such as PHD Guiding to control your autoguider. PHD Guiding software is freeware and can be downloaded from the Stark-Labs website. In addition, the LPI-G ASCOM drivers need to be installed for proper communication with the LPI-G.

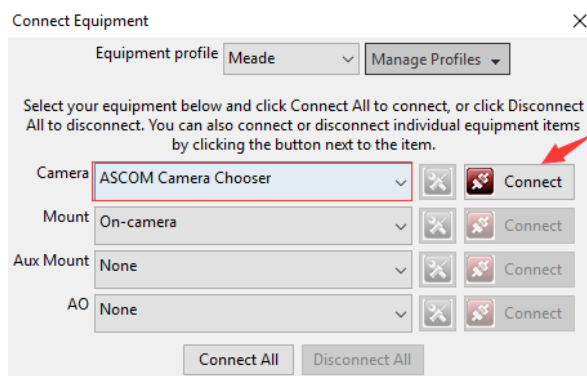
3. Using 3rd Party Software with the LPI-G

✧ Using the ASCOM driver in PHD Guiding

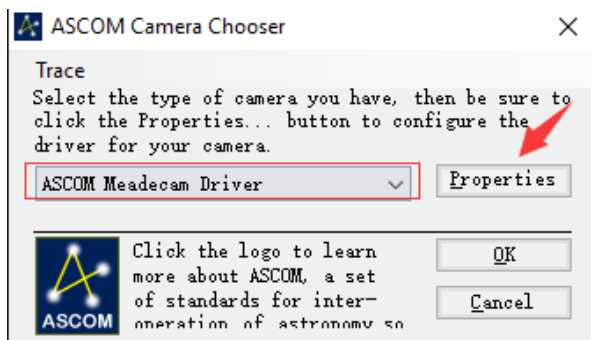
Run PHD Guiding software first and click the camera button on the left bottom of the application



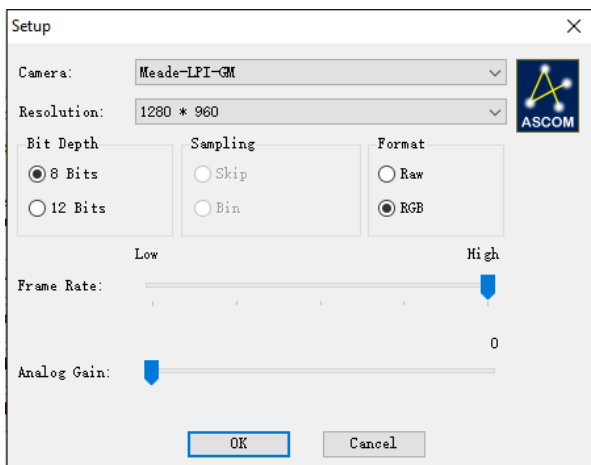
Select the “ASCOM Camera Chooser” in the Camera selection drop list box and then click the “Connect” button.



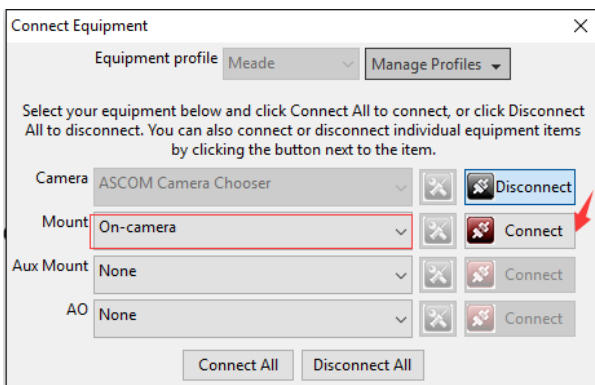
Select "ASCOM Meadecam Driver" in the drop list box and click "Properties".



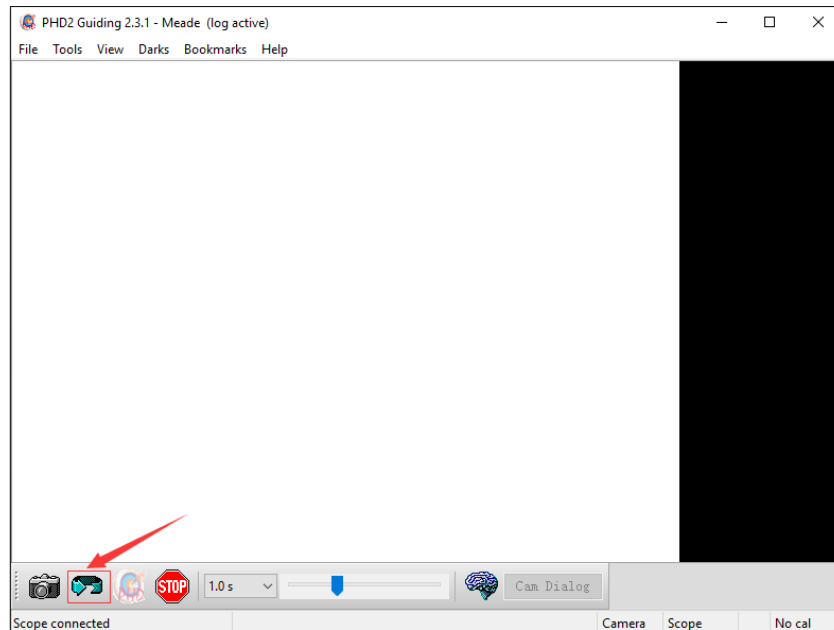
Change the setting in the following dialog and then click the "OK" button



Select the "On-Camera" in the Mount drop list box and click "Connect"

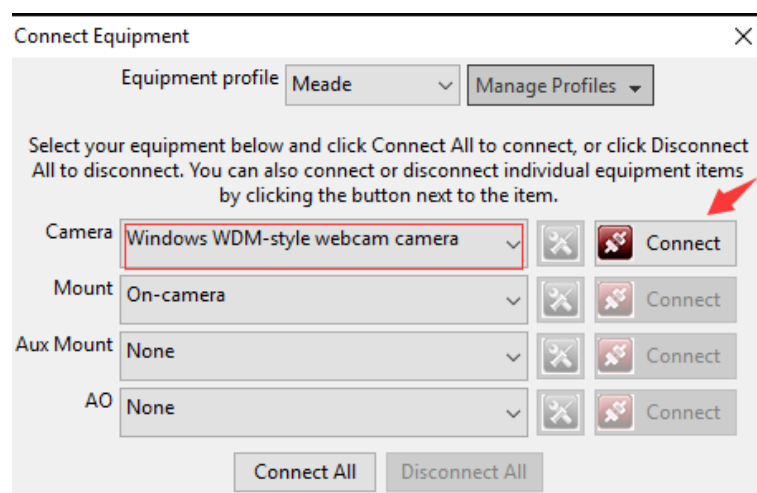


Close the Connect Equipment dialog to go back to PHD Guiding main interface. Then click the loop button to start the exposure.

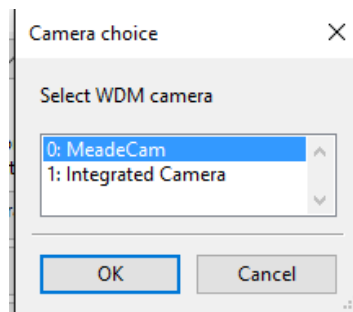


✧ Using the DirectShow driver in PHD Guiding

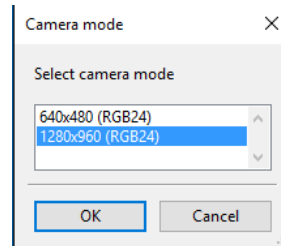
Select "Windows WDM-style webcam camera" in the camera selection drop list box and click "Connect" button.



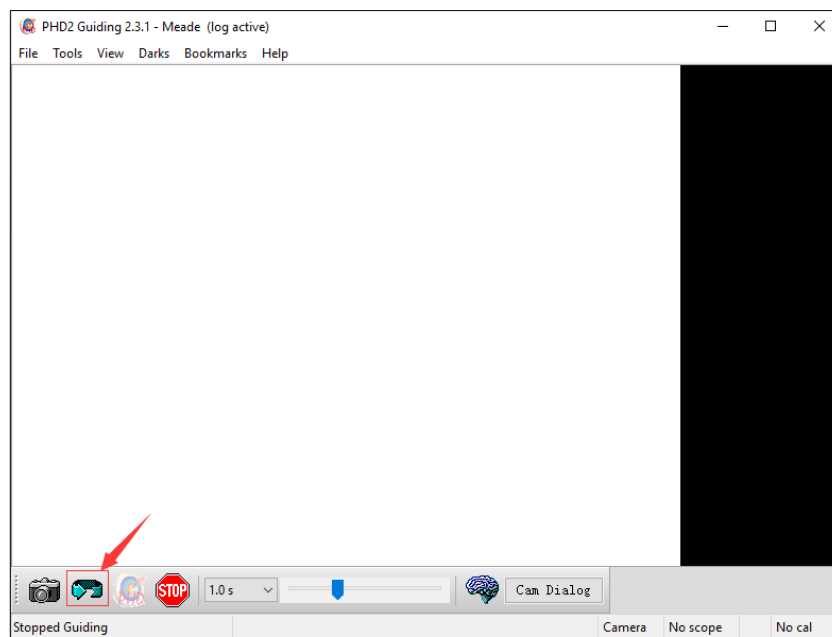
Choose "MeadeCam" in the pop up Camera choice box.



Choose the resolution in the Camera mode box.

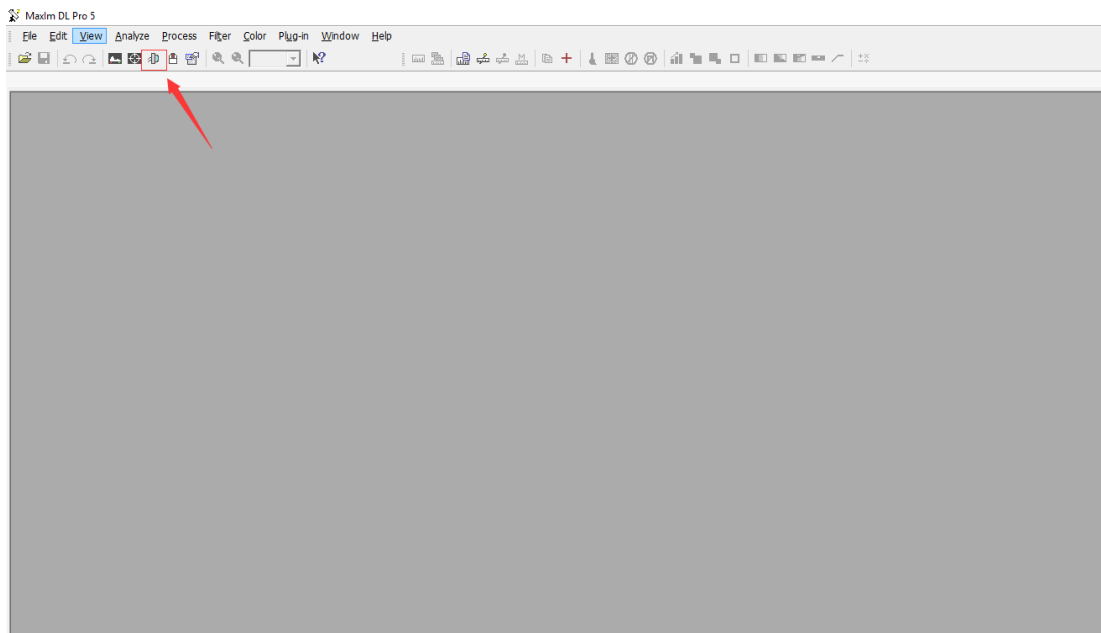


Go back to the main interface and click the loop button to start the exposure as the following.

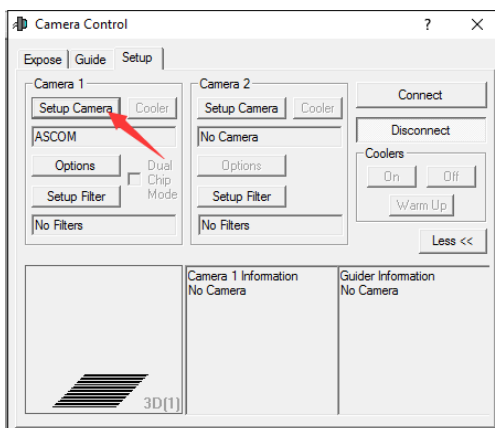


✧ Using the ASCOM driver in Maxim DL

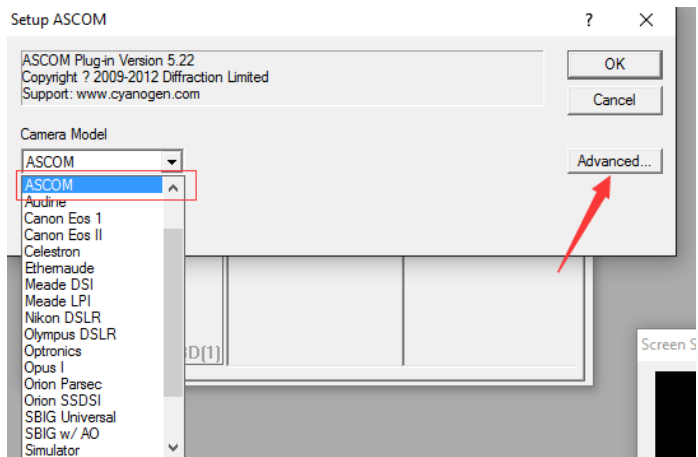
Click the camera button in the tool bar.



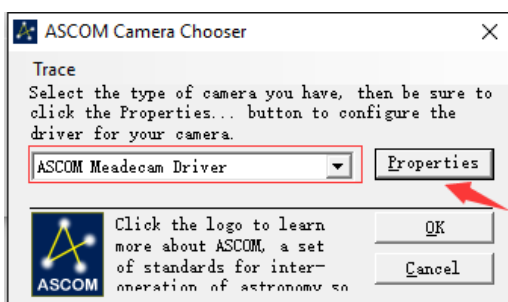
Click the "Setup Camera" button in the pop up Camera Control dialog box.



Select "ASCOM" and click the "Advanced..." button.



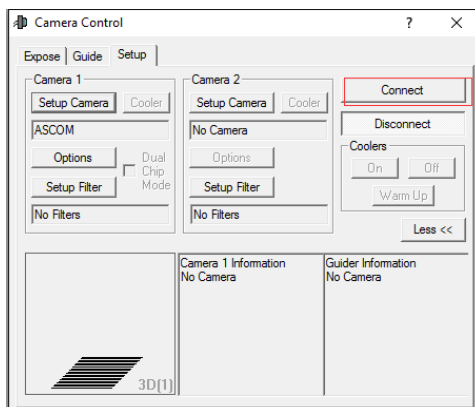
Select "ASCOM Meadecam Driver" in the drop list box and click the "Properties" button.



Adjust the camera settings as appropriate, or use the default settings, then click "OK"

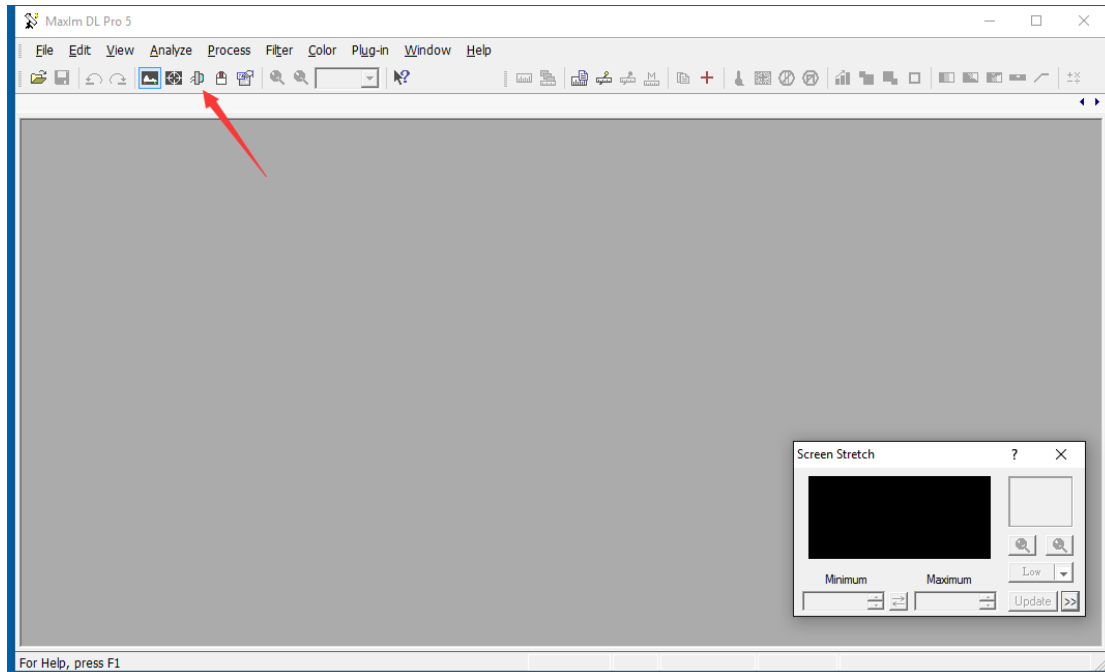


Click the "Connect" button to accomplish the connection.

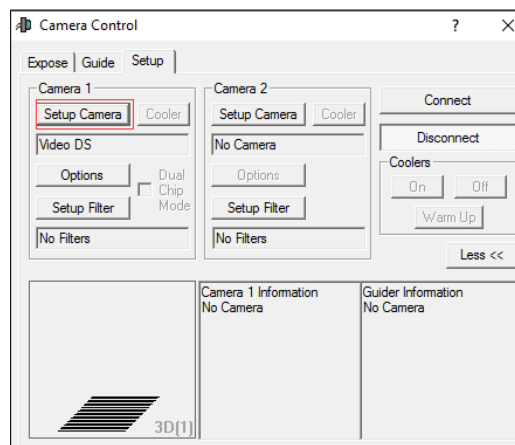


✧ Using the DirectShow driver in Maxim DL.

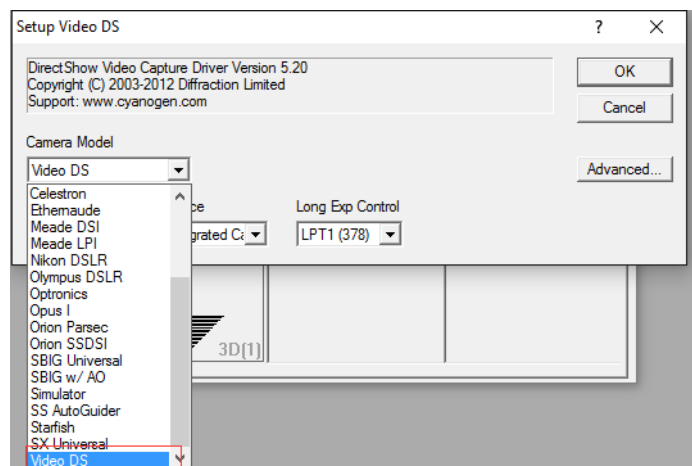
Click the camera button in the tool bar.



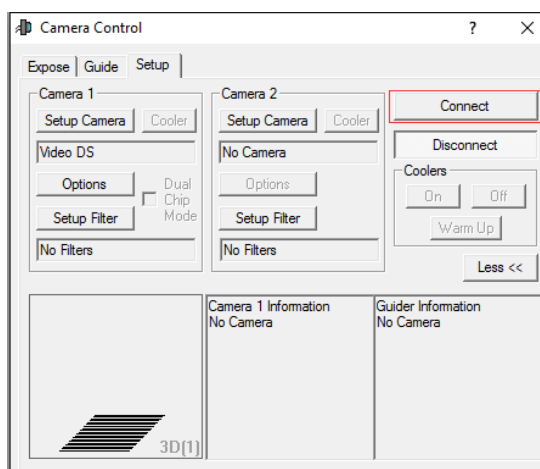
Click the "Setup Camera" button as the following.



Select the "Video DS" in the pop up dialog and click "OK".

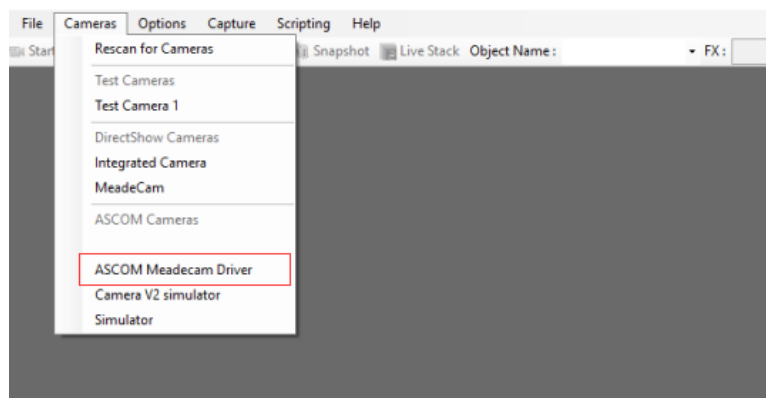


Click "Connect" to start the video.

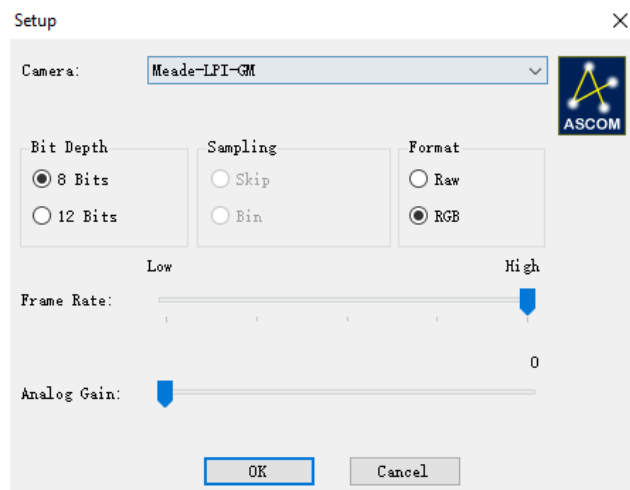


✧ Using the ASCOM driver in SharpCap

Select "ASCOM Meadecam" item in the ASCOM cameras section of the Cameras menu.



Change settings (or not) and click “OK” to start the video.



✧ Using the DirectShow driver in SharpCap

Select “MeadeCam” item in the DirectShow cameras section of the Cameras menu to start the video.

